

SITE AERIAL



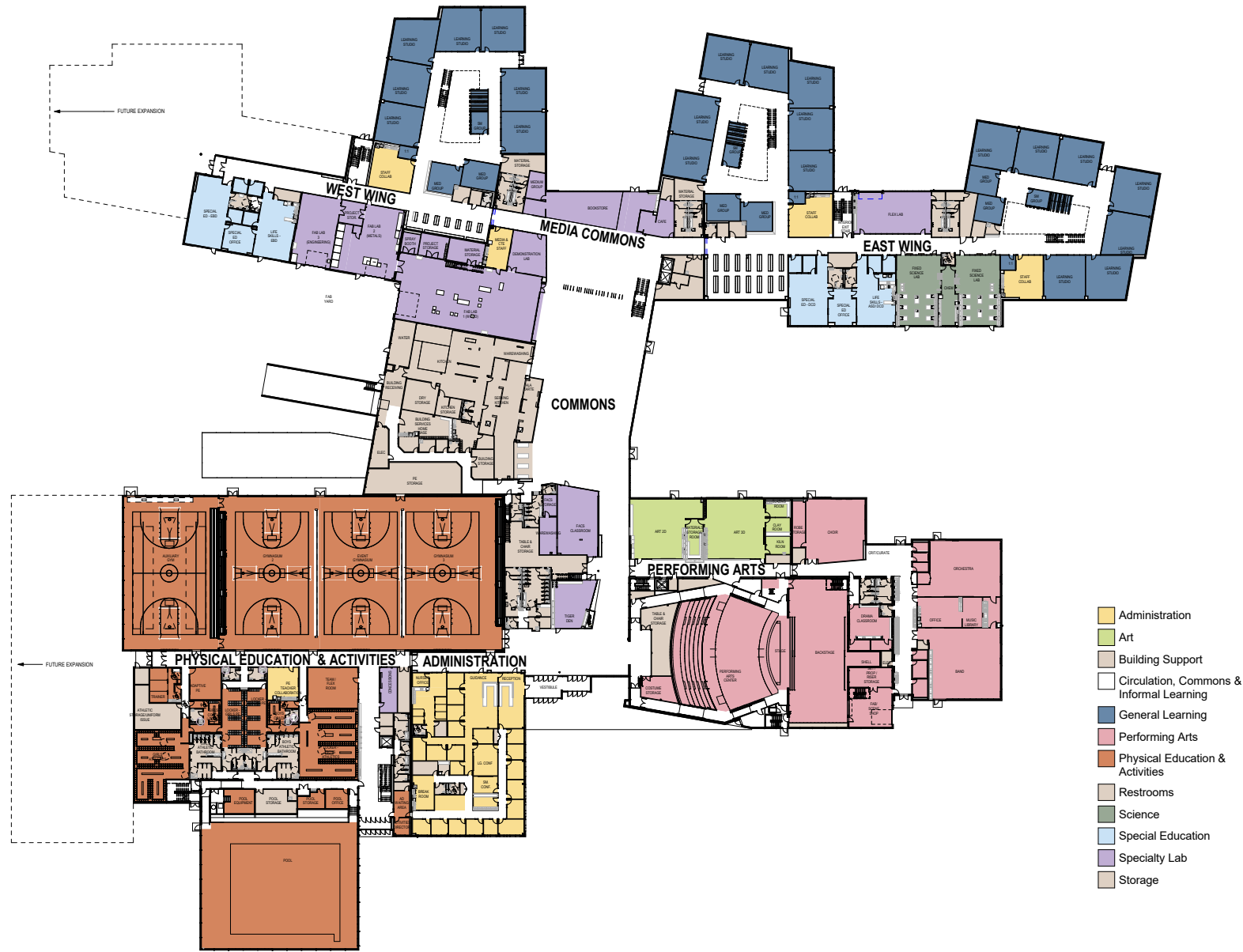
St. Cloud Tech High School

ics | CONSULTING, INC



CUNINGHAM
G R O U P

LEVEL ONE



LEVEL TWO



FRONT ENTRY



St. Cloud Tech High School

ics | CONSULTING, INC



CUNINGHAM
G R O U P

FRONT ENTRY

ST. CLOUD TECH HIGH SCHOOL



St. Cloud Tech High School

ics | CONSULTING, INC



CUNINGHAM
G R O U P

LEARNING NEIGHBORHOODS



St. Cloud Tech High School

ics | CONSULTING, INC



CUNINGHAM
GROUP

COMMONS



St. Cloud Tech High School

ics | CONSULTING, INC



CUNINGHAM
G R O U P

LEARNING NEIGHBORHOOD



St. Cloud Tech High School

ics | CONSULTING, INC



CUNINGHAM
G R O U P

CROSSING CAFE



TIGER DEN



tiger pride



St. Cloud Tech High School

ics | CONSULTING, INC



CUNINGHAM
G R O U P



CONSULTING, INC

TECH BP 3
BID REVIEW
AND ALTERNATE
RECOMMENDATIONS

Bid Package Summaries

- 34 Work Scopes total.
 - BP 1 – 6 Work Scopes
 - BP 2 – 4 Work Scopes
 - **BP 3 – 24 Work Scopes (to be awarded)**
- 4 Alternates in bid in Bid Package 1
- 18 Alternates in bid in Bid Package 3.

Bid Package Summary and Recommendations

- Bids received for Bid Package 3 are being recommended to award.
- 15 of 22 Alternates are currently being recommended to award.
- Bids and Alternates recommended for award are all within the project budget.
- **65%** of the Bid Package contracts will be issued to **Local Contractors**
 - Local contractor defined as being located within 30 Miles of St Cloud.

ics

CONSULTING, INC

TECH CONSTRUCTION PROGRESS

1/10/18

WORK IN PLACE THROUGH JAN 5th

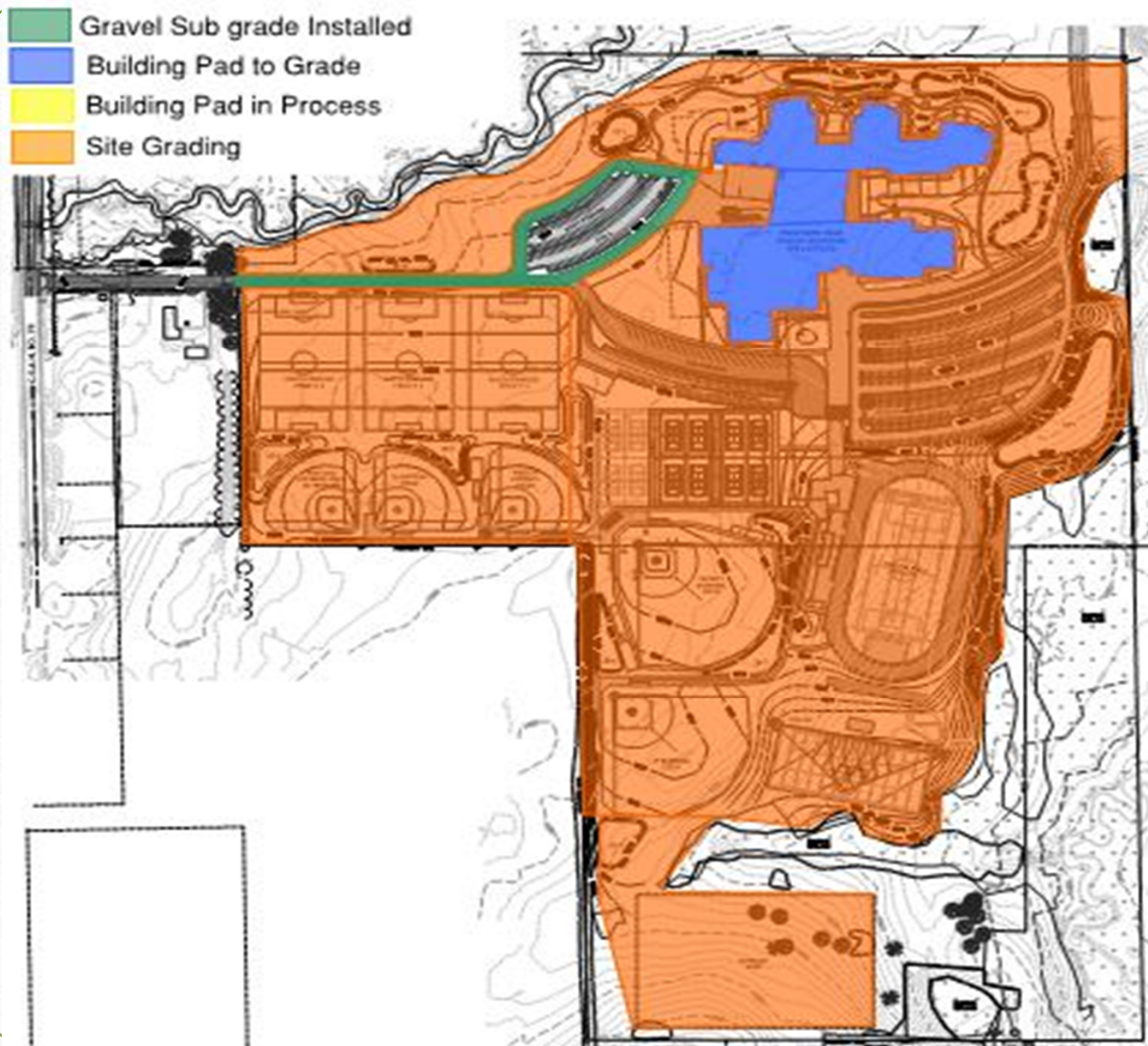
- Footings and Foundations in place in the three Learning Neighborhoods and eastern portion of the Commons and Performing Arts. Gymnasium Area is underway.
- Sanitary sewer lift station is in place along with a portion of the sanitary sewer and water lines.
- Mass site grading completed for the year.

Footings and Foundations Continue



FOOTING AND FOUNDATION COMPLETION







UPCOMING SCHEDULED ACTIVITIES

- Footings and Foundations to continue in Gymnasium, Pool, Administration and Performing Arts.
- Structural Steel installation to begin the last week of January.
- Precast Wall Panels to begin being installed at the Gymnasium on February 26th.